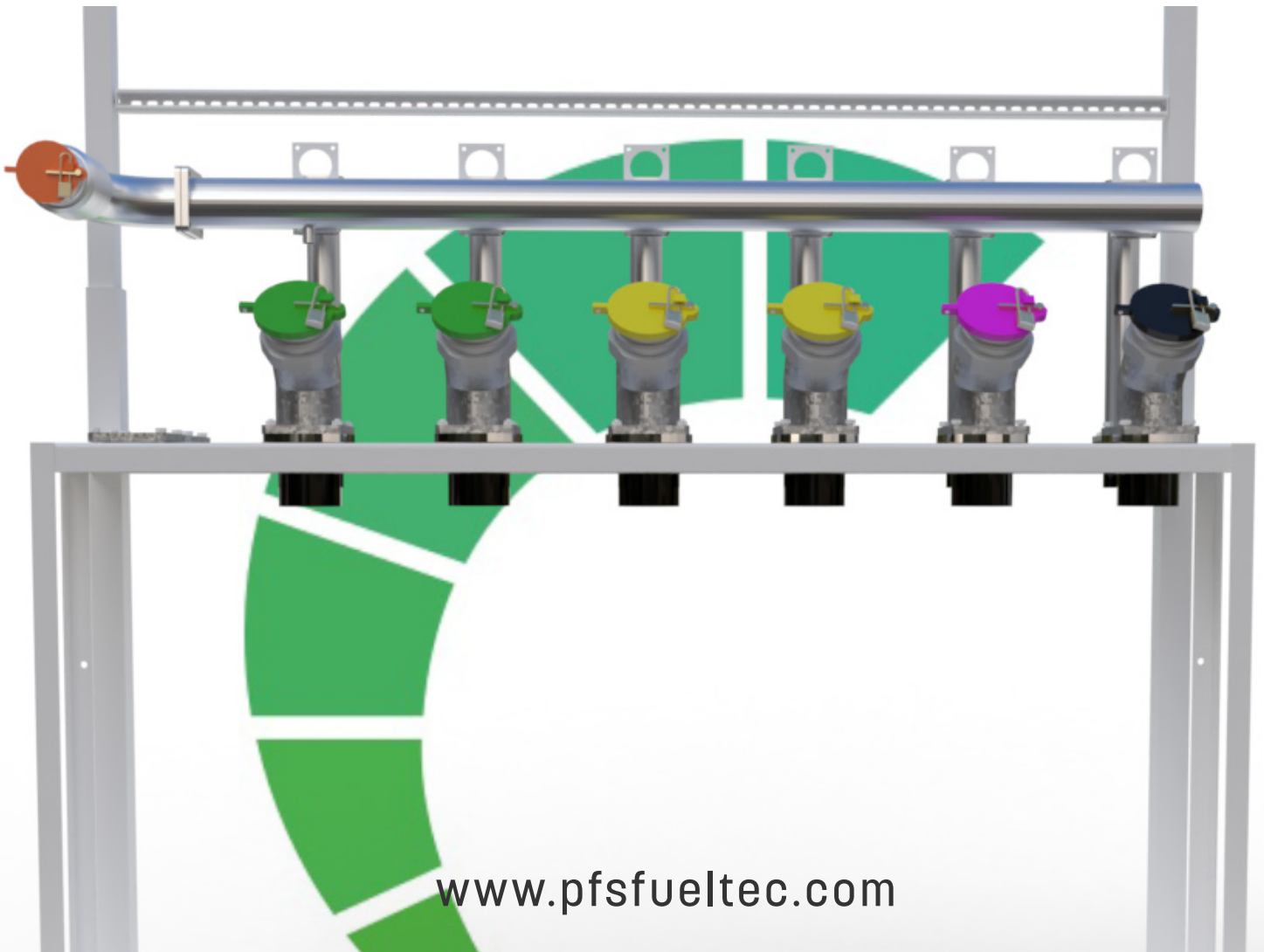




EasyFill + EasyVent

— MODULAR —
PRE-ASSEMBLED
REMOTE FILL & VENT STACK
SOLUTIONS



www.pfsfueltec.com

Introducing the improved EasyFill & EasyVent from PFS Fueltec.

We listened to the market and created a new slicker, easier to install, leak-tight fill and vent frame product line to simplify your remote fill and vent stack requirements.

The pre-assembled fill and vent assemblies are designed to take the hassle out of designing and installing remote fill points and vent stacks on petrol filling stations and other fleet refuelling systems.

Available for sites with 1 - 12 underground tanks and compliant with UK and European vapour recovery and road tanker delivery regulations, we build and test every unit on our assembly line before we ship to site.

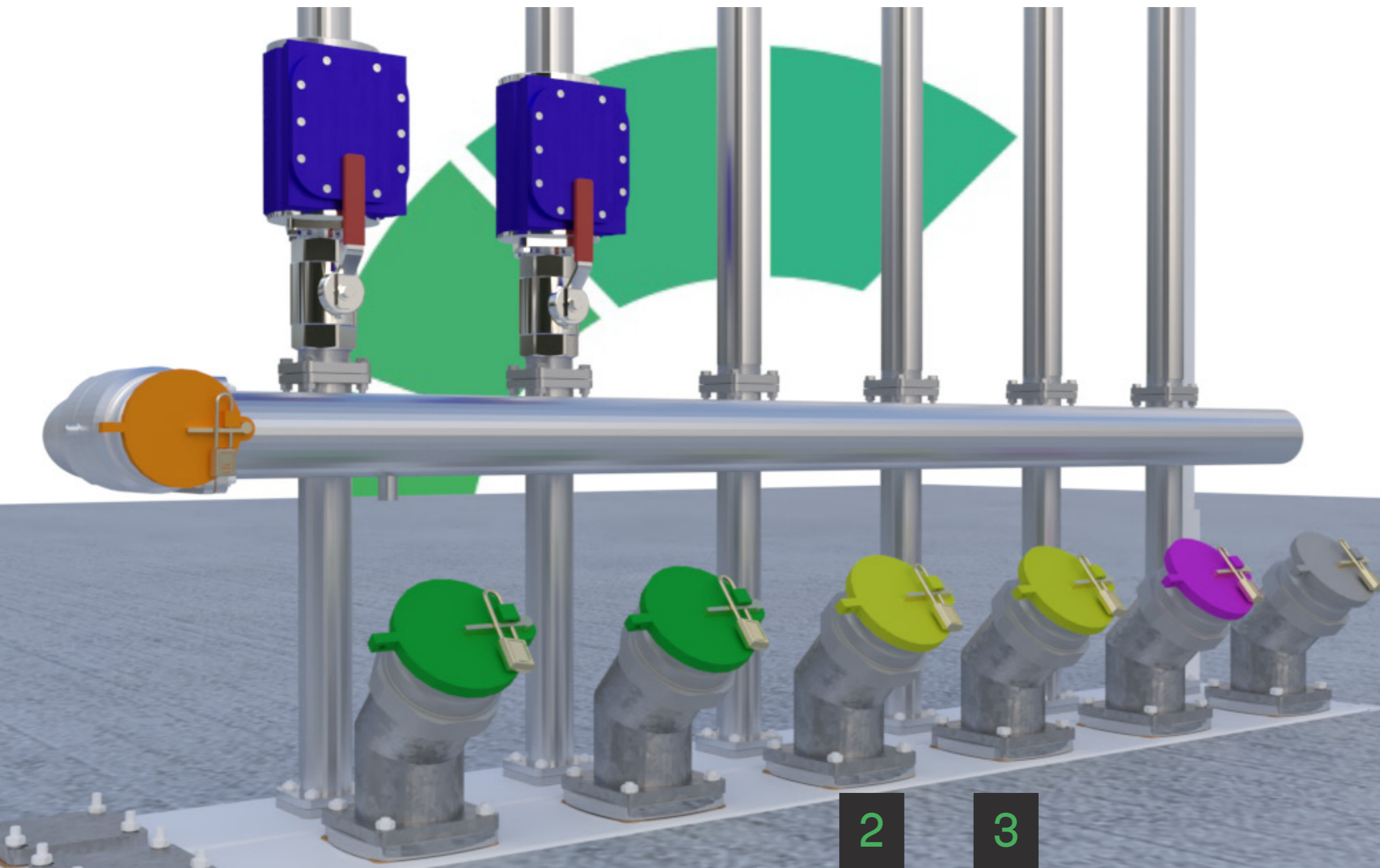
**SAVE TIME,
SAVE MONEY**

These pre-assembled units can save up to 2 days of on-site labour compared to conventional site built solutions.

We've worked hard to ensure value - market analysis shows the EasyFill and EasyVent frames are up to 30% cheaper than similar competing products, and the build quality is second to none.

FEATURES & BENEFITS

- Factory assembled
- Tightness tested
- Powder coated frames
- Galvanised fill and VR1 elbows
- Complete with fill adaptors and caps
- Optional VR1 adaptors and caps
- Stainless steel vent manifolds
- Light-weight aluminium vent risers
- Low-level pressure-vacuum valves
- Easy to spec
- Simple installation, no work at height
- Streamlined design looks great on every forecourt

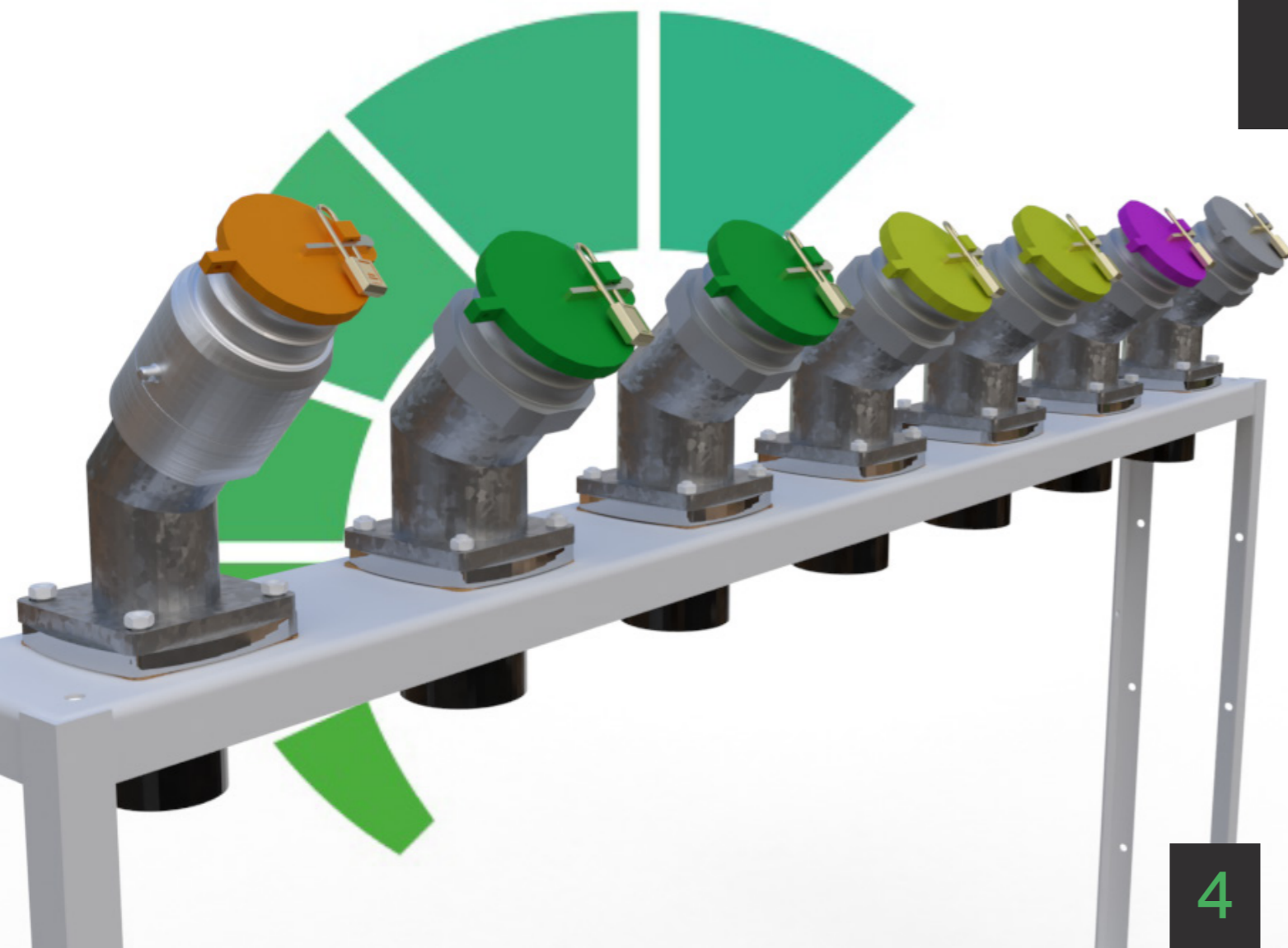


EasyFill

Powder coated fill frames and fully galvanised elbows mean the PFS EasyFills are designed to last the lifetime of your site.

110mm PE Pipework stubs compatible with all brands of below ground pipework are pre-fitted, ready to connect up your below ground fill pipework lines.

We supply fill adaptors, caps and padlocks as part of the assembly as well as optional VR1 adaptors and caps.

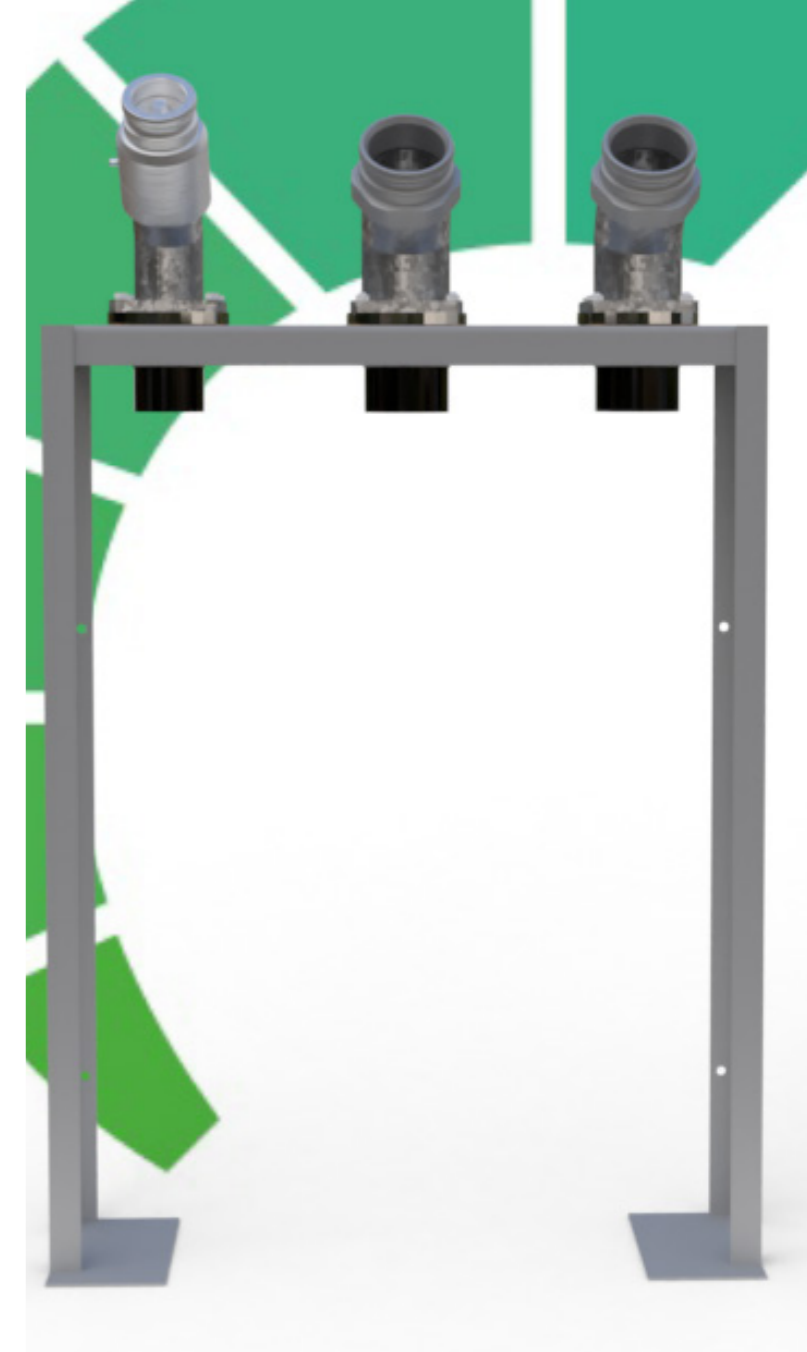


READY TO GO

Every fill frame is pre-fitted with threaded fill adaptors and caps with padlocks.

We know that fill adaptors are frequently damaged during day-to-day wear and tear. Unlike other fill frames our adaptors are easy and cost-effective to remove and replace - keeping your site operational has never been simpler.

If requested we can also pre-fit with Vizicap® colourised caps to suit your fuel grades.

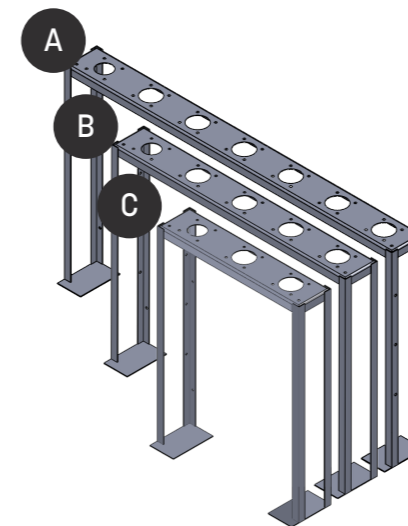


VAPOUR RECOVERY

If your fill frame is located away from your vent stack then a vapour recovery adapter + cap can be added to your fill assembly. A 90mm PE pipe stub under the VR assembly allows fast and easy connecting of underground pipework to the VR manifold at your vent-stack.

MODULAR

We designed our EasyFill assemblies around a core offering of 3 frames. This modular design principle helps reduce cost and complexity. Each frame has a VR port on the left handside and a further 2, 4 or 6 Fill ports. Unused ports are blanked off by us if not used. For larger sites, frames can be bolted together lengthways. This allows the creation of assemblies which can house 7 or more fill positions.



- A 6 POT FRAME**
2108mm long x 208mm wide x 1204mm tall
- B 4 POT FRAME**
1508mm long x 208mm wide x 1204mm tall
- C 2 POT FRAME**
908mm long x 208mm wide x 1204mm tall

4

5

EASYFILL

PRODUCT OFFERING



1 Fill

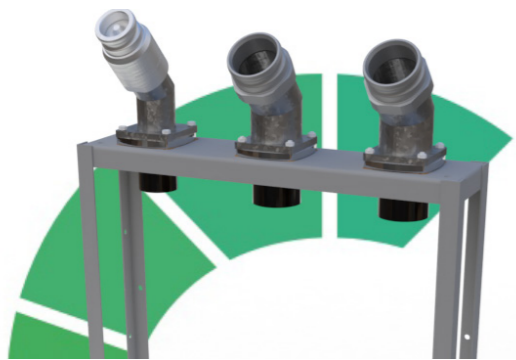
Single pot fill frame

With VR

FILLFRAME-1+VR

Without VR

FILLFRAME-1



2 Fills

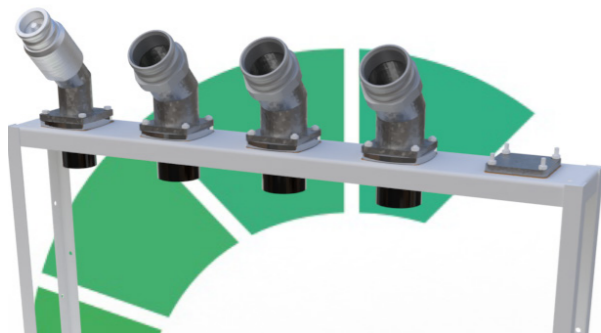
Double pot fill frame

With VR

FILLFRAME-2+VR

Without VR

FILLFRAME-2



3 Fills

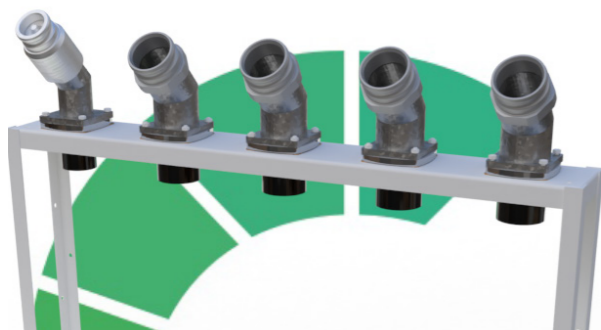
Triple pot fill frame

With VR

FILLFRAME-3+VR

Without VR

FILLFRAME-3



4 Fills

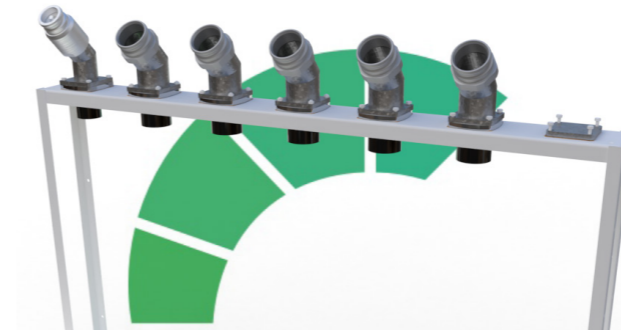
Quadruple pot fill frame

With VR

FILLFRAME-4+VR

Without VR

FILLFRAME-4



5 Fills

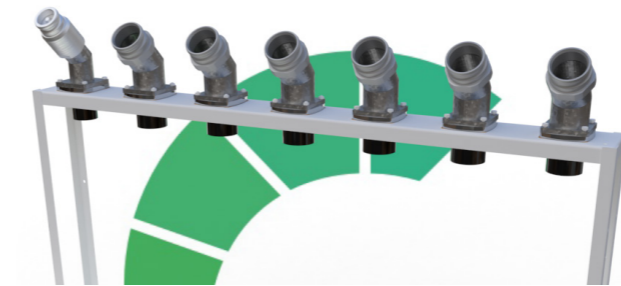
Five pot fill frame

With VR

FILLFRAME-5+VR

Without VR

FILLFRAME-5



6 Fills

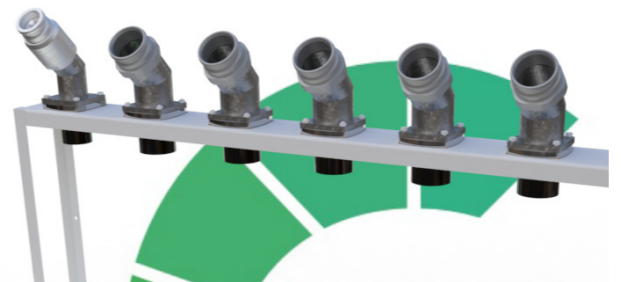
Six pot fill frame

With VR

FILLFRAME-6+VR

Without VR

FILLFRAME-6



7 + Fills

For seven or more fills simply order more than one frame. Frames bolt together side by side using the provided bolting holes. Even when bolted together the centre lines between fill positions are always 300mm apart, ensuring a symmetrical and visually pleasing aesthetic for every site.

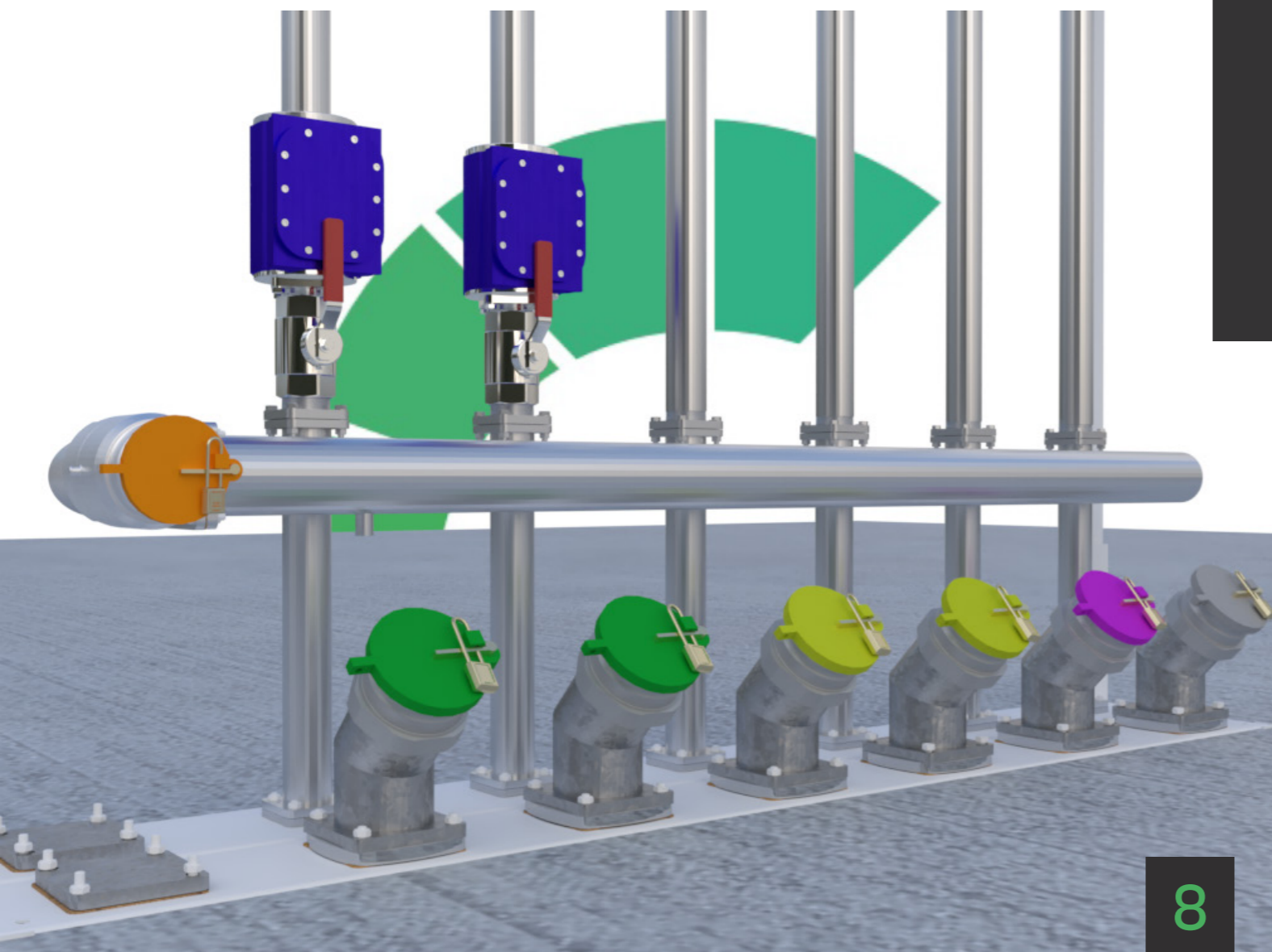
EasyVent

Powder coated Frames and stainless steel vapour recovery manifolds make the EasyVent the most durable vent stack solution available on the market.

Installation is easy thanks to our sliding goal-post and cross-bar clamping system. No work at height is needed as everything can be installed and clipped at low level before sliding the goal-posts up and bolting to the correct level.

The aluminium vent risers are all 2" in diameter - unlike other systems which reduce the riser diameter down to 1.5". This helps ensure good flow of ullage air-space and vapours which increases fuel delivery speeds by up to 20%.

63mm PE Pipework stubs compatible with all brands of below ground pipework are pre-fitted, ready to connect up to below ground vent pipework lines.

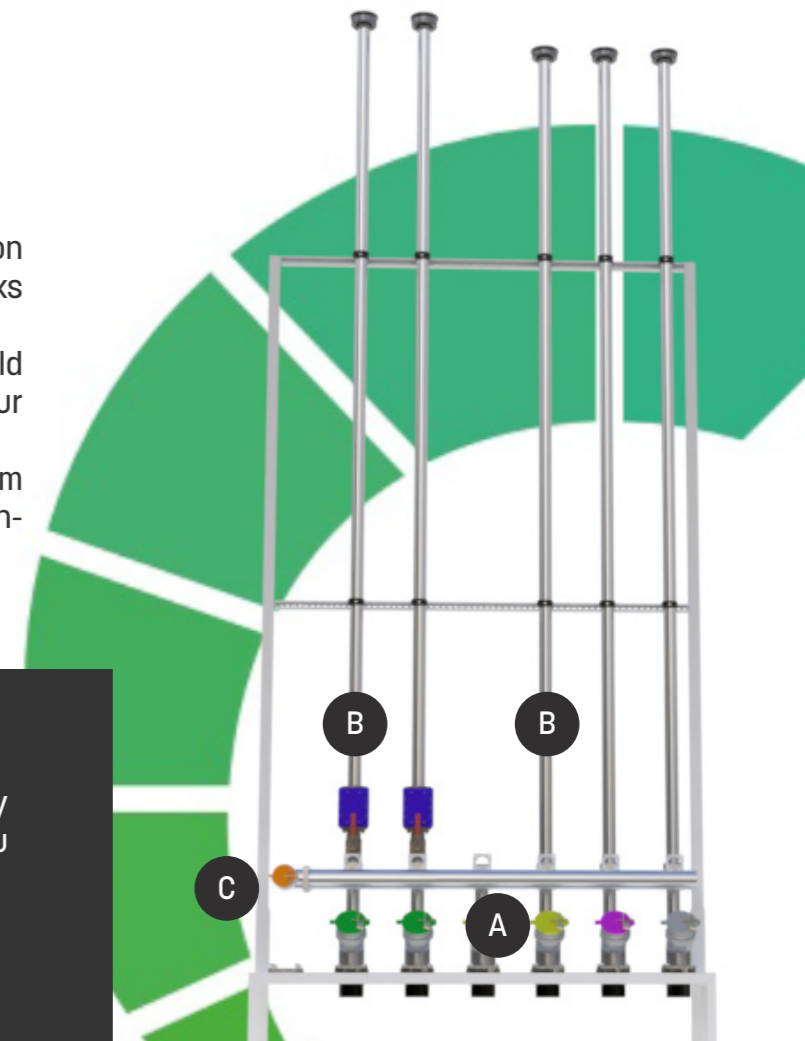


VAPOUR RECOVERY

Stainless steel VR manifolds are included on vent frames if there are Petrol and Diesel tanks to be vented.

This allows all the Petrol vents to manifold together for simple and efficient Vapour Recovery back to the road tanker.

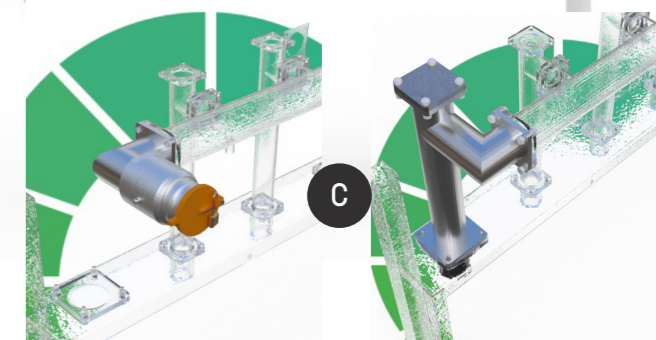
Diesel vents are simply redirected away from this manifold straight up to vent at high-level.



MODULAR DESIGN

The EasyVent system is completely modular. Order the parts of the system you need and we'll do the rest.

- A Vent Frame & Manifold**
Order the vent frame and manifold which matches the number of tanks you have on site
- B Petrol & Diesel Risers**
2" Aluminium Petrol vent risers with low-level or Standard PV valves. You can also add 3rd party risers if required.
- C VR1 Connection Kits**
It doesn't matter if your fill point (and VR1b hookup) is located directly in front of your vent stack or if it's somewhere remote, the EasyVent caters for both eventualities



NO MORE WORK AT HEIGHT

We've designed our EasyVent to be compatible with the new generation of low-level pressure vacuum valves.

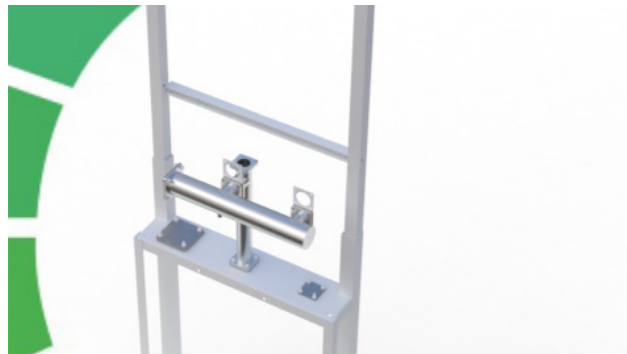
This means that all the items requiring regular testing and maintenance on Petrol vents are now located at waist height, instead of being positioned at the top of the vent stack.

At high-level only rain-caps & flame arrestors remain, and these are zero maintenance items.

This completely negates the need for work at height or for hinged vent risers that can fail and can themselves become a safety issue

EASYVENT

PRODUCT OFFERING



1 Vent

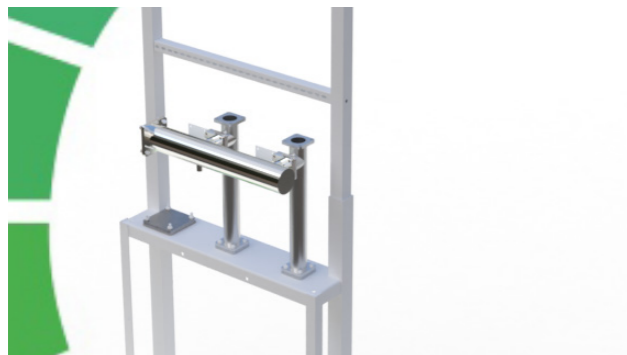
Single pot vent frame

With VR Manifold

VENTFRAME-1

Without VR Manifold

VENTFRAME-1-DSL



2 Vents

Double vent frame

With VR Manifold

VENTFRAME-2

Without VR Manifold

VENTFRAME-2-DSL

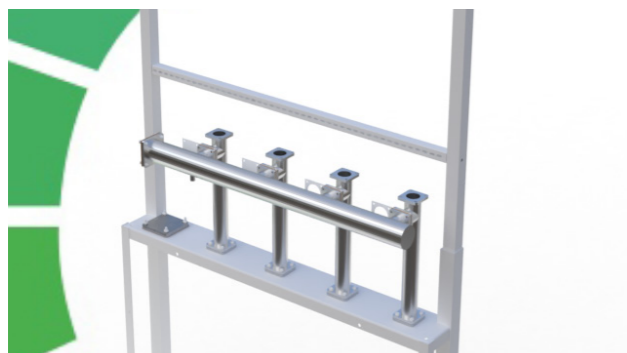


3 Vents

Triple vent frame

With VR Manifold

VENTFRAME-3



4 Vents

Quadruple vent frame

With VR Manifold

VENTFRAME-4

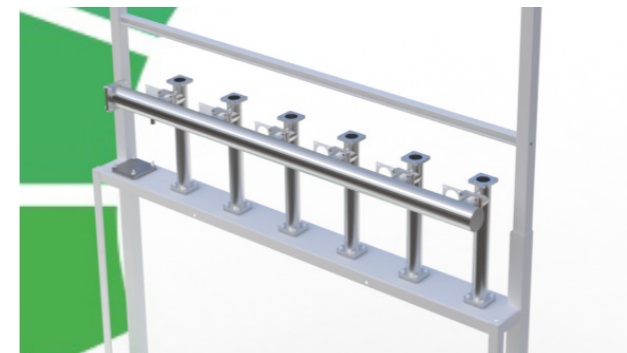


5 Vents

Five vent frame

With VR Manifold

VENTFRAME-5



6 Vents

Six vent frame

With VR Manifold

VENTFRAME-6

7 + Vents

For seven or more vents we can add extensions to the manifold and bolt a second frame next to the first one. This gives you unlimited possibilities in terms of the number of tanks you can vent and manifold into one system.

High-level risers

Vent riser kits include 4m high 2" lightweight aluminium risers, rain caps and pressure vacuum valves where applicable

Diesel Vent

Includes Standard diesel vent cap

DSLRISEKIT

Diesel Innovent

Includes Innovent rain proof diesel vent cap

DSL-INNOV-RISEKIT

Petrol Vent

Includes Standard high-level PV Valve

PTLRRISEKIT

Petrol Innovent

Includes Innovent low-level PV Valve + Locking ball valve

PTLR-INNOV-RISEKIT

Petrol Vent Cranked

Includes Standard high-level PV Valve

PTLRRISEKIT-CRANK

Petrol Innovent Cranked

Includes Innovent low-level PV Valve + Locking ball valve

PTLR-INNOV-RISEKIT-CRANK

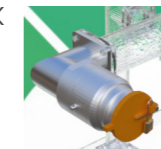
VR1 Connection

Options

Direct VR1 Connection

Elbow and Vapour Recovery valve to mount directly to the VR manifold on the Vent stack

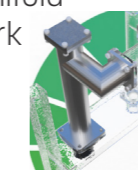
AG-VR1-VENTKIT

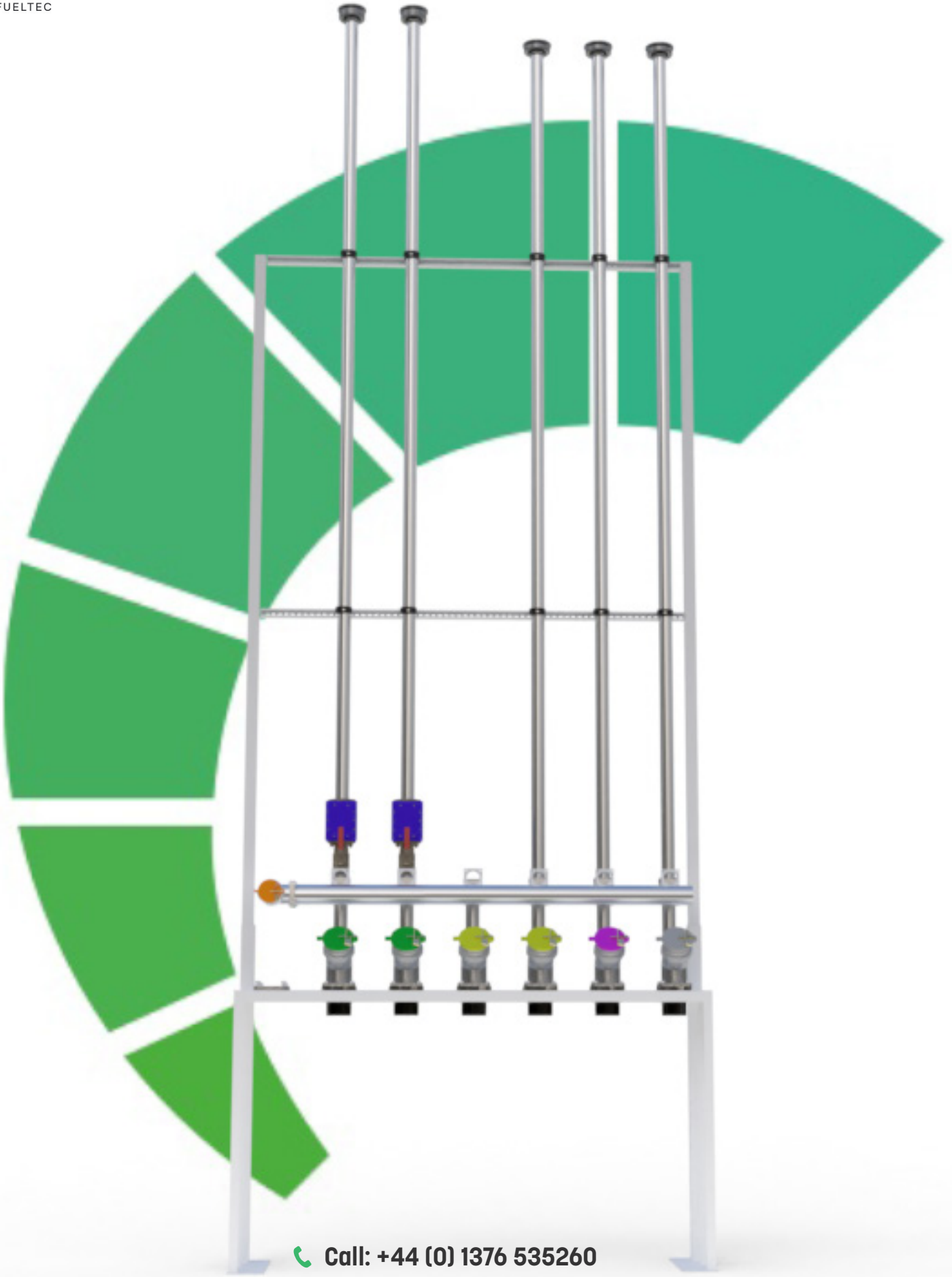


Remote VR1 Connection

Allows connection of VR1 manifold to below ground VR1 pipework back to Fill point

UG-VR1-VENTKIT





☎ Call: +44 (0) 1376 535260

✉ Email: pfssales@pfsfueltec.com

www.pfsfueltec.com