



**Franklin Electric**  
FUELING SYSTEMS



# **CABLE** **TIGHT**™

## **WIRE MANAGEMENT SYSTEM**



# A BETTER WAY TO INSTALL FORECOURT WIRING

For far too long, our industry has relied on old and outdated methods of conveying cables underneath forecourts. Franklin Electric delivers an innovative, liquid-tight and vapour-tight wire management solution that revolutionises the industry norm. The UPP® brand CableTight™ Wire Management System provides a true end-to-end solution for electrical, sensor, and data wiring containment. We have applied all of the benefits of the field-proven electrofusion welded pipework system to this crucial part of the forecourt installation to ensure a fully liquid-tight underground system.



## VAPOUR-TIGHT, LIQUID-TIGHT ENTRIES

Electrofusion welded entry seals create seamless connections between the conduit and containment while the integrated slotted compression disks give a complete 360° seal around every wire. These two crucial seal points ensure a tight system.

### HIGHLIGHTS

With the electrofusion welding process, the entry seal, conduit or ducting, and containment become one, leak proof system eliminating liquid or vapour penetration.

The unique compression disks and grommets individually grip each wire eliminating the potential for liquid or vapour intrusion.

A compression nut is tightened into place on the inside of the containment, locking the entire wire assembly into a liquid and vapour-tight assembly.



## CUSTOM ENTRY SEAL SOLUTIONS

Whatever market or standard you operate in, there is a liquid-tight entry seal to match your specific application. Each fitting type is also available with interchangeable compression disc options so you can customize it to your specific wire diameters.

### HIGHLIGHTS

The multi-cable entry seal is ideal for consolidating groups of 5mm to 17mm diameter wires into one entry point.

The rigid conduit entry fitting handles one to three ¾" bore rigid conduit entries where local regulations require steel conduit.

Direct bury entry fittings are ideal for applications where cable is directly buried in the ground, such as grounding wires and armored power cables.

A 110m electrofusion ducting entry seal is also available.



## RIGHT-SIZED CONDUIT & DUCTING OPTIONS

We studied forecourts across the world to determine common cable diameters and also which types are commonly grouped together. The result: an optimized conduit and ducting offering consisting of 32mm, 75mm, and 110mm diameter options.

### HIGHLIGHTS

Conduit is durable yet lightweight, making it easy to uncoil and lay into place on site.

Available in 100m (32mm conduit), 50m (75mm conduit), and 75m (110mm ducting) coils for long runs, eliminating the need for buried joints.

Unlike steel, the polyethylene construction of the conduit and ducting allows it to be corrosion resistant for a long service life once installed underground.



## FULLY OPTIMISED TRANSITION CHAMBER

Built specifically for wire management, the rugged transition chamber minimizes cost and the size of the containment space while providing an easy access point for the electrician for maintenance or future expansion.

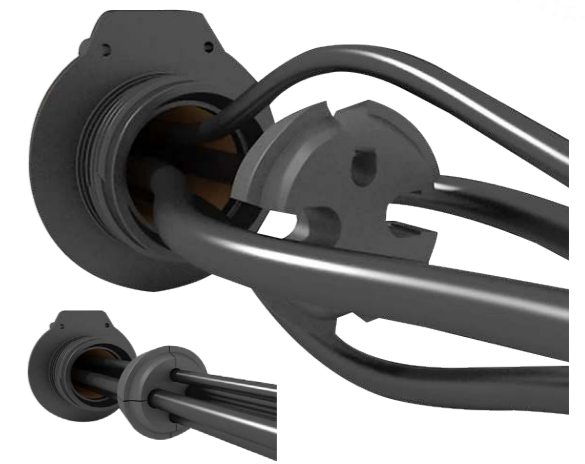
### HIGHLIGHTS

Features an integrated liquid-tight, load-rated cover minimizing installation time and keeping liquid out of the containment space.

A unique profiled bottom base provides wire management and prevents wires from being damaged while standing or working inside.

Features a removable shield plate barrier for separating cable and sensor wiring.

Preset molded entry seal drill guides.



## FASTER TO INSTALL, FUTURE-READY

The entire system was designed with the installer in mind to generate faster installations and make future changes simple while utilizing the same UPP® electrofusion welding tools you already use.

### HIGHLIGHTS

The slotted compression disk design allows wires to be slipped into place rather than having to pull them through each hole for significantly easier wire pulling.

Wire plugs can be placed in unfilled compression disk holes sealing them ready for future use.

Compression disks can be swapped out for added or changing wire diameters and quantities.

Larger diameter conduit and ducting provide ample space for additions.



# CABLE TIGHT™

## TOTAL SYSTEM SOLUTIONS™



**Franklin Electric**  
FUELING SYSTEMS

[franklinfueling.com](http://franklinfueling.com)

3760 Marsh Rd. • Madison, WI 53718, USA

Tel: USA & Canada +1 800 225 9787 • Fax: +1 608 838 6433

Tel: UK +44 (0) 1473 243300 • Tel: Mex 001 800 738 7610

Tel: DE +49 6571 105 380 • Tel: CH +86 10 8565 4566

© 2024 Franklin Electric Co., Inc. All Rights Reserved.

FFS-0462 04-24