



PRODUCT GUIDE

DoubleTrac® Pipework

Aboveground fuel transfer pipework system

DoubleTrac® Flexible Piping is an advanced solution for aboveground diesel and petrol transfers, ideal for in-building, outdoor, and marina use. Its flexible double-wall construction with corrosion-resistant stainless steel and an EFEP outer barrier ensures zero permeation and superior durability. Designed for easy manual installation without special tools, DoubleTrac® also supports continuous leak detection monitoring.

TYPICAL APPLICATIONS:

- Diesel Generator bulk tank to day/belly tank feed and return lines
- Marina fuel pipework systems on land & pontoons
- Aboveground outdoor fuel pipework
- In-building pipework systems (hanging or inside cable-trays)

KEY FEATURES:

- **Double-Wall Construction:** Incorporates a corrosion-resistant stainless steel inner layer and an EFEP outer barrier for maximum durability and zero permeation.
- **UV Rated & Fire-Tested Durability:** Rigorously tested to withstand fire for up to 2 hours, ensuring enhanced safety and resilience.
- **Easy Installation:** Flexible design allows for manual bending without the need for elbow fittings or special tools, streamlining the installation process.
- **Continuous Lengths:** Supplied in coils cut to the length you require, to eliminate joints, reducing the risk of leaks and simplifying installation.
- **Field-Attachable Fittings:** Ensure reliable metal-to-metal seals, enhancing system integrity and ease of assembly.
- **Leak Detection Ready:** Interstitial space and test-port ends allow connection of class 1 leak detectors

PRODUCT OPTIONS

DoubleTrac Pipe:

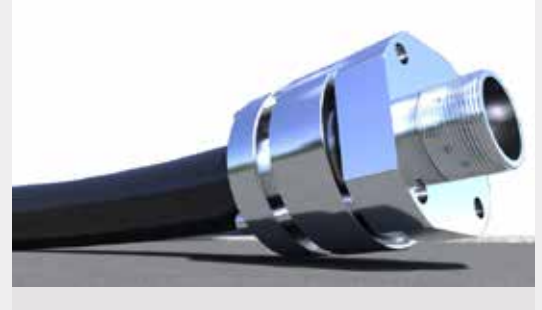
Pipe is available in the below nominal bore pipe diameters:

- 1"
- 1.5"
- 2"

DoubleTrac Fittings:

The following ASTM A276 S31600 Stainless Steel fittings with metal-to-metal liquid seals are available in all diameters:

- **90 Degree Elbows** (with integrated interstitial continuation)
- **Tees** (with integrated interstitial continuation)
- **Straight Couplings** (with integrated interstitial continuation)
- **BSPT Threaded Male Ends** (with integrated interstitial connection ports)



APPROVALS:

UL1369 Certified (Aboveground Piping For Flammable And Combustible Liquids):

- 'General Use Rating' for fuel transfer on-ground, in buildings or through duct & sumps.
- 'Special Use Rating' option for "Marina Use" on fixed or semi-floating docks

UL 1369 certification proves the following characteristics:

- Compatibility with common fuels (Diesel, HVO, Gasoline E0-E85, Jet Fuels etc.)
- Fuel blendstocks (B100, E100, M100)
- Special flammable liquids, chemicals or unclassified liquids (AdBlue)
- Temperature Rating @ -30 °C & +50 °C.
- Fire Resistance Rating – 2 HOUR FIRE TESTED
- Various Mechanical Strength tests (pressure/vacuum)
- Various Physical Abuse tests (Drop, impact, puncture, pipe and fitting torque, tension, compression, bending, support bracket)
- Additional corrosion resistance & tide cycle testing for Marina use

WARRANTY INFORMATION:

Manufacturers warranty covers all product material & manufacturing defects for the time limits specified below:

Aboveground and Marina use: 15 years

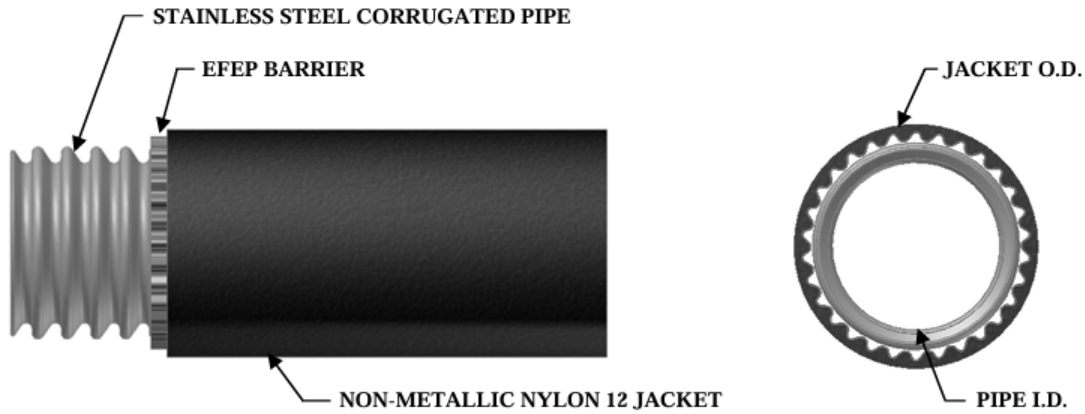
Underground use: 30 years

EXPERT DESIGN TIP:

To save cost and reduce potential leak paths we recommend utilising the availability of long-continuous lengths and the flexible nature of the pipework to negate or reduce the number of elbows and straight joints.

PRODUCT GUIDE

DoubleTrac® Pipework



PIPE DIMENSIONS & SPECIFICATIONS

| PART # | UGF-FSP-16 | UGF-FSP-24 | UGF-FSP-32 |
|-------------------------------------|------------|------------|------------|
| Nominal Bore | 1" | 1.5" | 2" |
| Pipe Internal Diameter | 27mm | 39mm | 74mm |
| Jacket Outer Diameter | 39mm | 58mm | 52mm |
| Minimum Bend Radius | 305mm | 610mm | 813mm |
| Weight | 1.12 kg/m | 2.24 kg/m | 2.98 kg/m |
| Maximum Horizontal Support Distance | 1.8m | 2.4m | 3.0m |
| Maximum Vertical Support Distance | 4.5m | 4.5m | 4.5m |



FITTING DIMENSIONS

| DESCRIPTION | PART # | WIDTH (mm) | HEIGHT (mm) | LENGTH (mm) |
|--------------------------|--------------|------------|-------------|-------------|
| 1" FITTINGS | | | | |
| Straight Joint | UGF-CPL8-16 | 76 | 76 | 152 |
| 90 Degree Elbow | UGF-SSEL-16 | 76 | 127 | 127 |
| Tee | UGF-SSTEE-16 | 76 | 127 | 178 |
| BSPT Male End Transition | UGF-FSTE-16 | 73 | 73 | 101 |
| 1.5" FITTINGS | | | | |
| Straight Joint | UGF-CPL8-24 | 101 | 101 | 191 |
| 90 Degree Elbow | UGF-SSEL-24 | 101 | 168 | 168 |
| Tee | UGF-SSTEE-24 | 101 | 168 | 216 |
| BSPT Male End Transition | UGF-FSTE-24 | 102 | 102 | 122 |
| 2" FITTINGS | | | | |
| Straight Joint | UGF-CPL8-32 | 117 | 117 | 188 |
| 90 Degree Elbow | UGF-SSEL-32 | 117 | 180 | 180 |
| Tee | UGF-SSTEE-32 | 117 | 180 | 246 |
| BSPT Male End Transition | UGF-FSTE-32 | 117 | 117 | 111 |